

## S-GE-SFP/S-GE-2SFP

### Management GE MC (Media Converter)

Supports 6 business scenarios, with the simplest usage of in-band OAM

### Overview

The S-GE-SFP/S-GE-2SFP management GE media converter is for the applications such as FTTx, and Carrier Ethernet.

S-GE-SFP is equipped with 2 \*GE ports (1xSFP, 1xRJ45), S-GE-2SFP is equipped with 2 \*GE SFP ports, S-GE-SFP/S-2GE-SFP supports media conversion, wavelength conversion and distance extension.

S-GE-SFP/S-GE-2SFP supports Web/CLI/SNMP management, RFD, dying gasp, loopback, IP ping, MIB counter function, etc. It offers quick fault reporting on the management platform, greatly reduced maintenance workload.

S-GE-SFP/S-GE-2SFP supports bandwidth limit function which can meet the needs of different paying users. When the speed requirement is increased, only the configuration parameters are needed to be changed, and no hardware upgrade is required.

S-GE-SFP/S-GE-2SFP supports multiple working modes, the supported working modes are Standalone Transparent, Host-Remote Transparent, Standalone QinQ, Host-Remote QinQ, Standalone Switch and Host-Remote Switch. it applicable to a variety of application scenarios.



### Highlights

- Third-party compatible SFP conversion with multi-mode, single-mode, single-fiber
- Support both single-end (standalone) and host/remote configurations
- Programmable link fault pass-through (LFP) or remote fault detection (RFD) function
- In-band management and configurable VLAN/IP, ICMP supported (In-band management VLAN and IP are configurable and ICMP reachable)
- L2 Control Protocol Transparency
- SFP internal ID and status monitoring capability (DDMI)
- Web/CLI/SNMP Management, 3rd party SNMP and EMS/NMS management solutions
- Dual AC, Dual DC power supplies with power on/off alarm
- Security – Exclusive physical layer traffic path
- Transparent - Unaware to all upper service

- Egress/Ingress rate management control
- Supports Dying gasp. When the power supply voltage drops to dangerous level or comes back to normal level, converter sends warnings to the network management system automatically.
- Loopback capability for link integrity test; supports both line side and client-side loopback
- Supports hardware management such as system info, card hardware version, converter location, port description etc.
- Warnings for link status, power on/off
- Three levels of user authorization (superuser, administrator and guest)
- Supports system log

## Specification

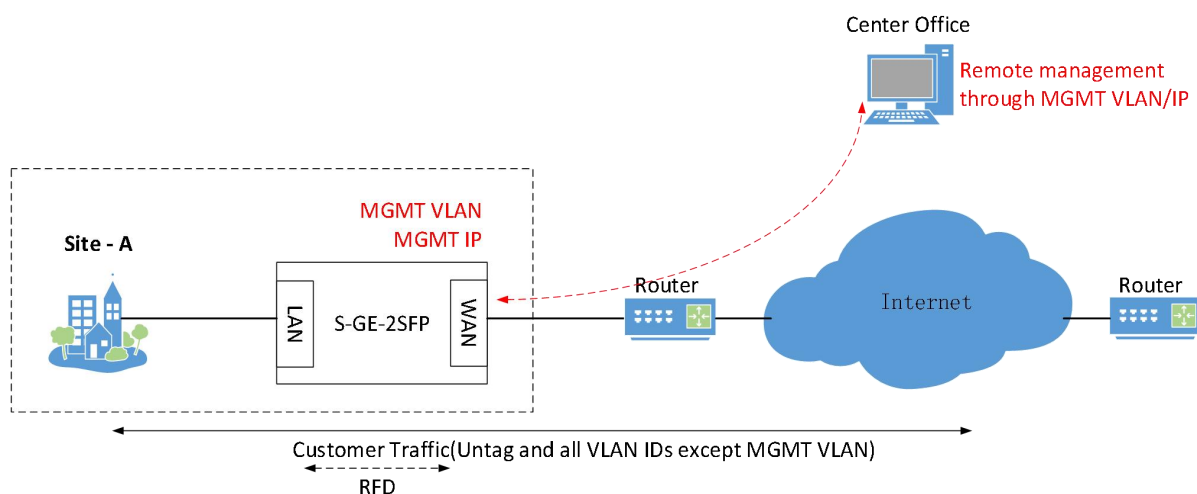
Interface	Number of LAN Ports	1* 100/1000Base-X SFP (S-GE-2SFP) 1*10/100/1000BT RJ45 (S-GE-SFP)	
	Number of WAN Ports	1* 100/1000Base-X SFP	
	Wavelengths	Depends on SFP transceiver	
	Optical Reach	Depends on SFP transceiver	
	Data Rates	100/1000M Ethernet	
	Connectors	SFP transceiver	
Features	Management	In-band, WEB, CLI, SNMP	
	Transparent	Unaware to all upper service	
	Jumbo Frame	9216 Bytes	
	RFD/LLF	Support	
	ALS	Support	
	Dying gasp	Support	
	Working Modes	DIP Switch, Host, Remote, Standalone	
	Bandwidth limit	rate	step
	< 10Mbps	1Mbps	
	10~100Mbps	10Mbps	
	100~1000Mbps	50Mbps	
Diagnosis	IP ping	Support	
	Loopback	LAN side or WAN side	
	MIB Counter	Support	
Management	Firmware upgrade		
	Configuration backup/restore		
	Web/CLI/SNMP		
	SNTP		
	Syslog		
	User Accounts		
Installation	Wall mount or desktop		
Power supply	Support dual power adaptor input, 12VDC Converter can work with single power supply.		
Power consumption	<8w		

Dimensions(mm)		
	176mm*126mm*31mm	
Weight	0.56kg	
Environment	Operating temperature	0°C ~ 50°C
	Storage temperature	-40°C ~ 85°C
	Operation Humidity	10% ~ 90% RH Non-condensing
	Storage Humidity	5% ~ 95% RH Non-condensing

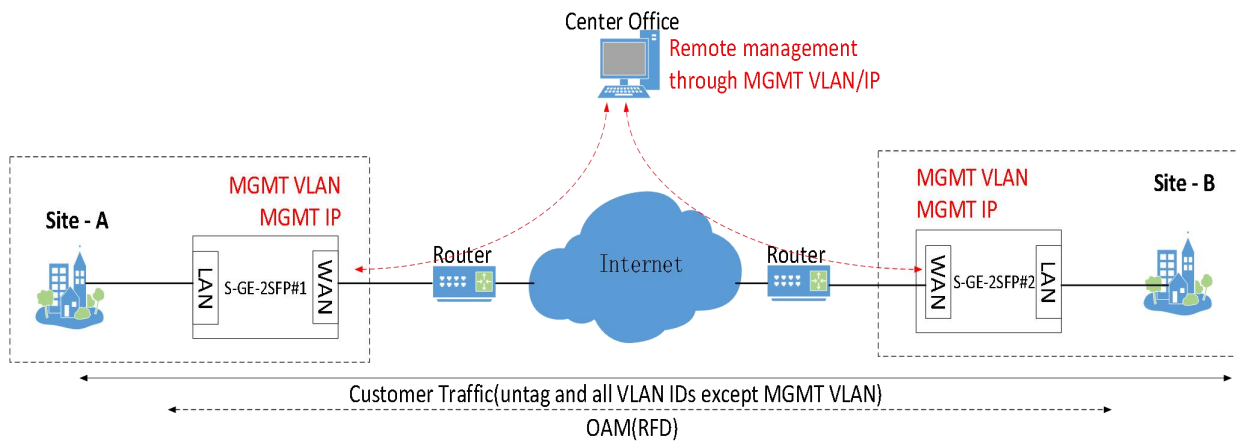
## Application

- Ethernet Media conversion (wavelength, distance, single fiber/dual fiber, single mode/multi-mode)
- Reach extension
- Ethernet demarcation unit
- Performance monitoring (Quality of Service)
- Business Ethernet, leased line

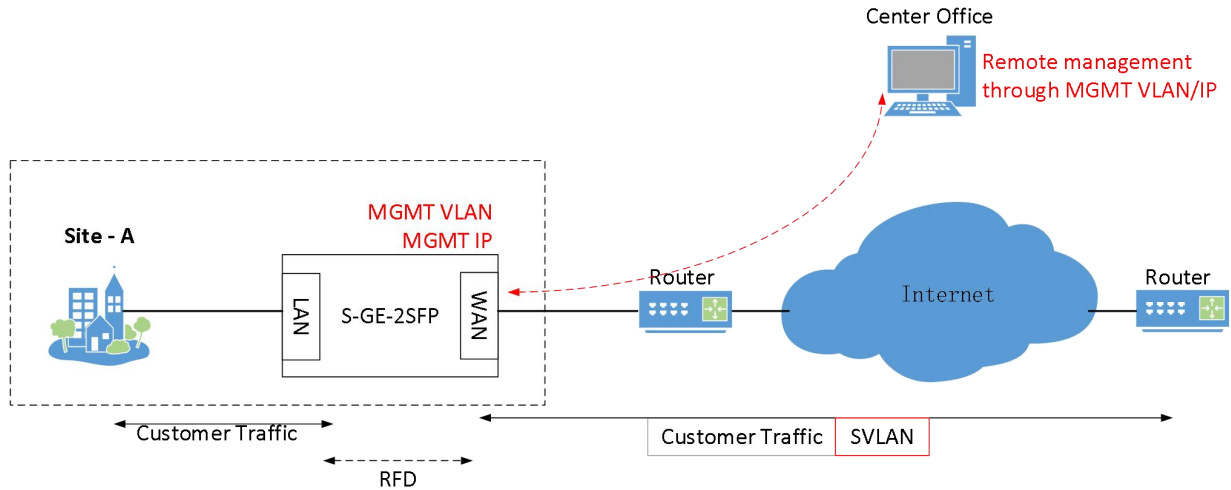
### Scenario 1: Standalone transparent application



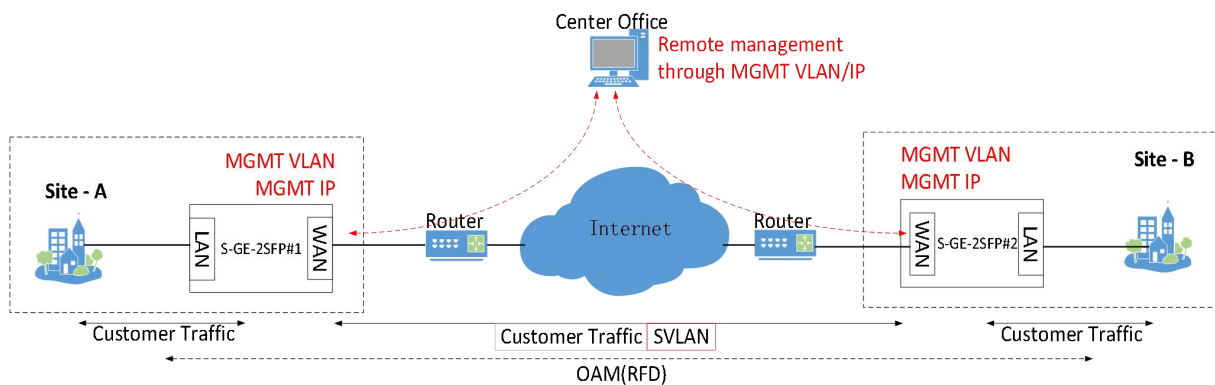
### Scenario 2: Host/Remote transparent application



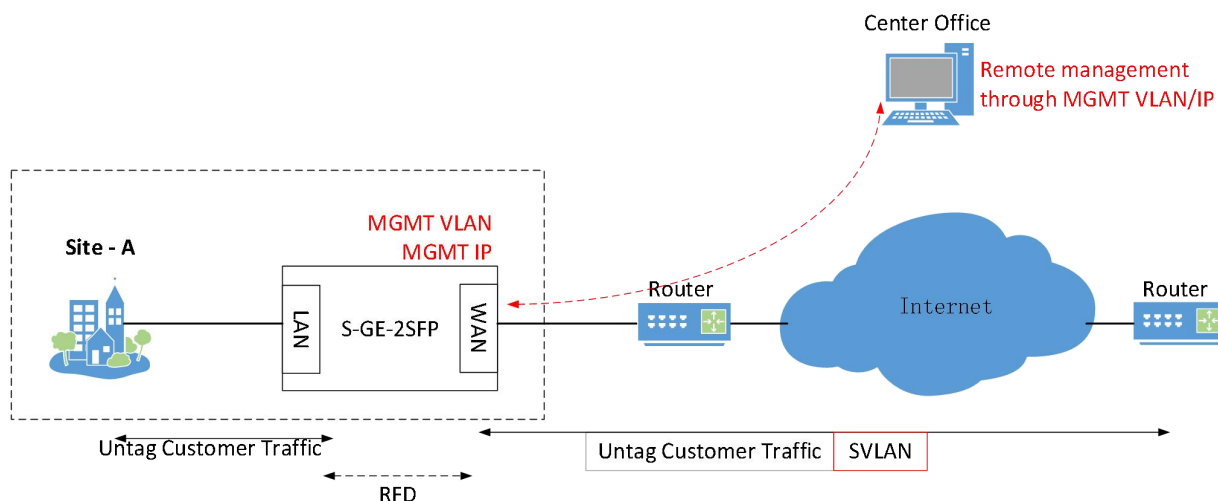
### Scenario 3: Standalone QinQ transparent application



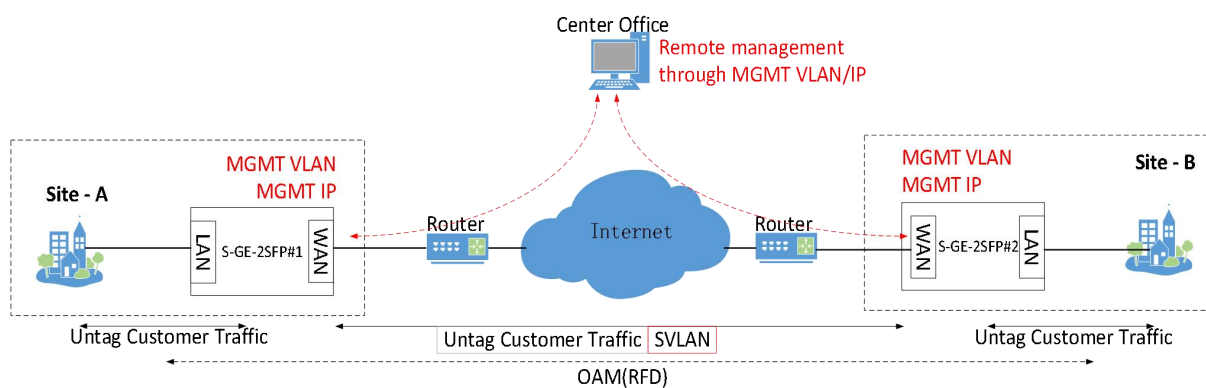
### Scenario 4: Host/Remote QinQ transparent application



### Scenario 5: Standalone switch transparent application



### Scenario 6: Host/Remote switch transparent application



### Ordering Information

Model Name	Description
S-GE-SFP	2* 100M/1G SFP ports Support FE/GE Ethernet Protocol Supports CLI based, Web-based and SNMP management
S-GE-2SFP	1* 100M/1G SFP port and 1*10/100/1000 RJ45 port Support FE/GE Ethernet Protocol Supports CLI based, Web-based and SNMP management