

Overview

The S-10GE-2SFP+ standalone management 10GE MC is for the applications such as FTTx, CWDM, and Carrier Ethernet. It is equipped with two SFP+ ports and support various media conversion, wavelength conversion and distance extension.

S-10GE-2SFP+ MC supports Web/CLI/SNMP management, RFD/LLF, dying gasp, loopback, IP ping, MIB counter function offer quick fault reporting on the management platform, greatly reduced maintenance workload.

The bandwidth limit function can meet the needs of different paying users. When the speed requirement is increased, only the configuration parameters need to be changed, and no hardware upgrade is required.

Key feature:

- E2E(End to End) hard pipe – fine granularity
- Security – Exclusive physical layer traffic path
- QoS – Guaranteed bandwidth; no packet loss
- Transparent - Unaware to all upper service



Highlights

- Third-party compatible SFP+ conversion with multimode, single-mode, single-fiber and different reach options:
 - ◆ 10GBase-T Copper SFP+
 - ◆ 10GBase-SR SFP+
 - ◆ 10GBase-LR SFP+
 - ◆ 10GBase-ER SFP+
 - ◆ 10GBase-BX SFP+ of different optical powers
 - ◆ 10GBase CWDM SFP+ of different optical powers
 - ◆ 10GBase DWDM tunable module
- Support both single-end (standalone) and host/remote configurations
- Programmable link fault pass-through (LFP) or remote fault detection (RFD) function
- In-band management and configurable VLAN/IP, ICMP supported (In-band management VLAN and IP are configurable and ICMP reachable)
- L2 Control Protocol Transparency
- SFP internal ID and status monitoring capability (DDMI)
- Support variety loopback test
- Web/CLI/SNMP Management
- Dual AC, Dual DC power supplies with power on/off alarm

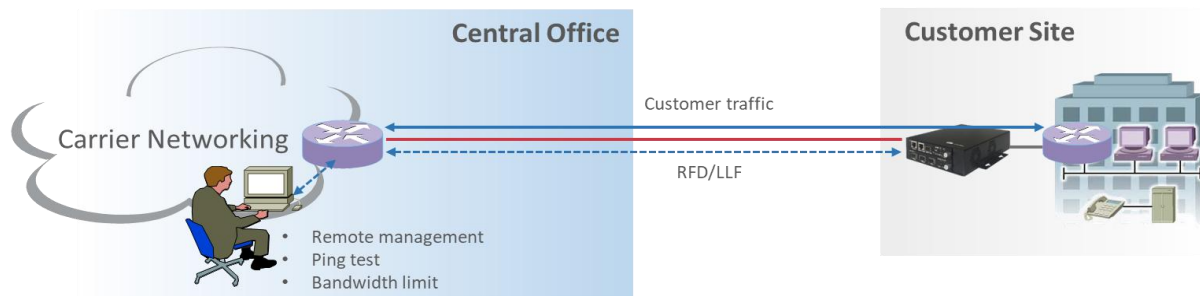
Specification

Interface	Number of LAN Ports	1*SFP+ ports, supports tunable DWDM module	
	Number of WAN Ports	1*SFP+ ports, supports tunable DWDM module	
	Wavelengths	Depends on SFP+ transceiver	
	Optical Reach	Depends on SFP+ transceiver	
	Data Rates	10GE/5GE/2.5GE/1GE Ethernet	
	Connectors	SFP+ transceiver	
Features	Management	In-band	
	Transparent	Unaware to all upper service	
	Jumbo Frame	9216 Bytes	
	RFD/LLF	Support	
	ALS	Support	
	Dying gasp	Support	
	Standalone or Host/Remote Mode	Support, configurable	
	Bandwidth limit	rate	step
	< 10Mbps	1Mbps	
	10~100Mbps	10Mbps	
	100~1000Mbps	50Mbps	
	1~10Gbps	1Gbps	
Diagnosis	IP ping	Support	
	Loopback	Line side or Client side	
	MIB Counter	Support	
Management	Firmware upgrade		
	Configuration backup/restore		
	Web/CLI/SNMP		
	SNTP		
	Syslog		
	User Accounts		
Installation	Wall mount or desktop		
Power supply	Support dual power adaptor input, 12VDC Support dual 48VDC power supply (built-in power)		
Power consumption	< 8W		
Dimensions(W*D*H)	148mm*199mm*43mm		
Weight	1.2kg		
Environment	Operating temperature	0°C ~ 50°C	
	Storage temperature	-20°C ~ 85°C	
	Humidity	5% ~ 95% RH Non-condensing	

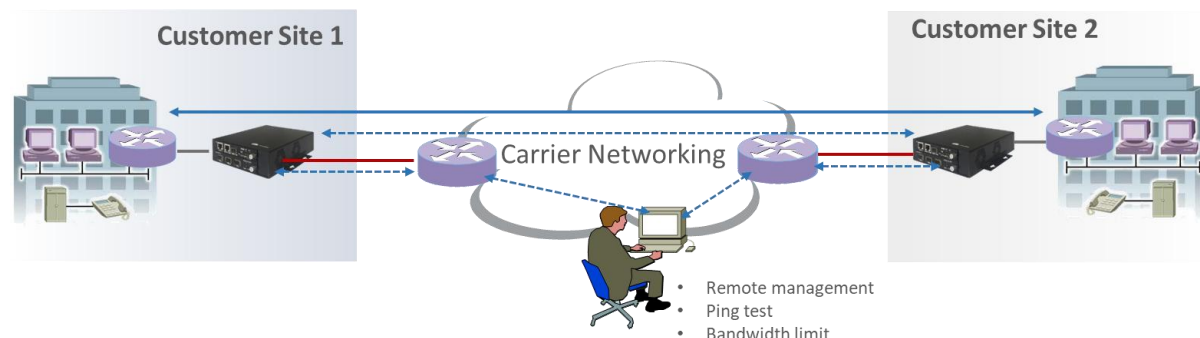
Application

- Ethernet Media (wavelength, distance, single fiber/dual fiber, single mode/multi-mode) conversion
- Reach extension
- Ethernet demarcation unit
- Performance monitoring (Quality of Service)
- business ethernet, leased line

Standalone Mode:



Host/Remote Mode:



Ordering Information

Model	Description
S-10GE-2SFP+	<ul style="list-style-type: none"> • 2* SFP+ ports • Support CLI based, Web-based and SNMP management • Support 1GE/2.5GE/5GE/10GE Ethernet Protocol • Support dual power adaptor input, 12VDC • Support dual 48VDC power supply (built-in power) • 2 built-in fixed FAN • Include 1x 12VDC/2A power adaptor

Related Products

Please contact sales@firstmile.com.cn for various 10G SFP+ module information.